

Thursday, Jun 18th, 2015

Technical stocks for the day

| Scrip Name | Buy/Sell | CMP | Stop Loss | Target |
|------------|----------------|------|-----------|-------------|
| COLPAL | Buy above 1962 | 1959 | 1948 | 1980 – 2005 |
| L&T | Buy above 1725 | 1710 | 1712 | 1750 - 1765 |

| Indian Indices | BSE | NSE |
|----------------|----------|---------|
| Open | 26815.41 | 8084.20 |
| High | 26983.48 | 8136.85 |
| Low | 26728.89 | 8048.95 |
| Close | 26832.66 | 8091.55 |
| Change | 146.15 | 44.25 |
| % Chg | 0.55 | 0.55 |

Source: BSE NSE

| Global Indices | Close | (%)Chg |
|----------------|----------|--------|
| Dow Jones | 17935.74 | 0.17 |
| Nasdaq | 5064.88 | 0.18 |
| Nikkei | 20098.92 | -0.60 |
| Hang Seng | 26698.50 | -0.21 |
| FTSE | 6680.55 | -0.44 |

Source: Bloomberg .

| Commodity | Close | Chg |
|-------------------|---------|-------|
| Gold(\$/Ounce) | 1186.60 | 9.80 |
| Silver (\$/Ounce) | 16.11 | 0.16 |
| Crude(\$/bbl) | 59.63 | -0.29 |

Source: Bloomberg

| Currency | Close | (%) Chg |
|----------|---------|---------|
| Rs/USD | 64.2525 | -0.27 |
| Rs/EUR | 72.3300 | -0.20 |

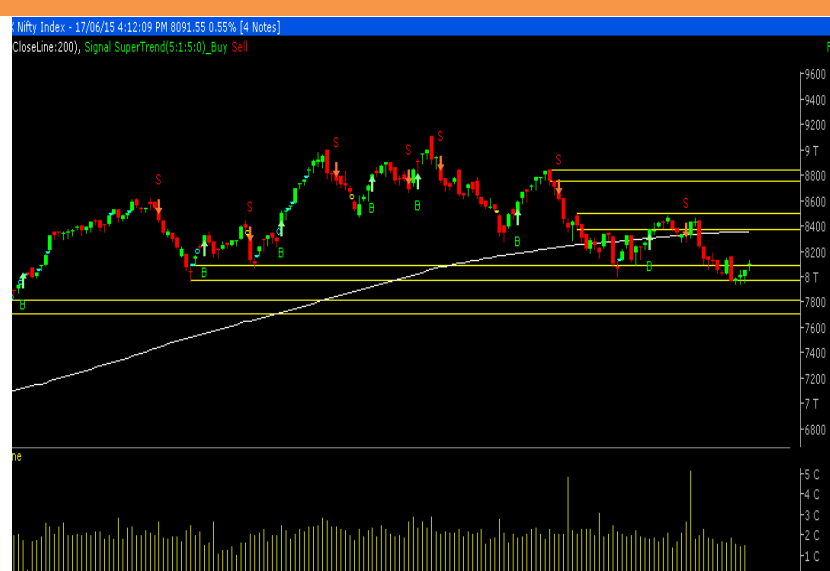
Source: MCX-SX.Com.

| Support/Resistance | Nifty | Sensex |
|--------------------|-------|--------|
| Support 1 | 8048 | 26714 |
| Support 2 | 8005 | 26594 |
| Resistance 1 | 8136 | 26967 |
| Resistance 2 | 8181 | 27102 |

| 52 Wk High (A group) | | | 52 Wk Low (A group) | | |
|----------------------|-------------|------------|---------------------|-------------|-----------|
| Company | Close Price | 52 Wk High | Company | Close Price | 52 Wk Low |
| Bajaj Fin | 4790 | 4790 | EID Parry | 146.8 | 145.5 |
| BEML | 1253 | 1273 | JP Infra | 11.75 | 11.70 |
| Britannia | 2759 | 2780 | Laxmimach | 3737 | 3720 |
| Dish TV | 114.2 | 117.2 | Vedanta | 173 | 172.2 |
| Glenmark | 971.1 | 986.6 | Videocon | 137.7 | 134.1 |

Source: BSE

Market Overview And Technical Outlook



Source-Falcon

On 17/06/2015 markets opened higher and traded with positive bias throughout the day to close in green. On the sectoral front Consumer Durable, Healthcare and FMCG led the rally whereas Power and Bankex ended with marginal losses. The advance decline ratio was in favour of advancing counter (Advances = 1715/ Declines = 938).

Pattern Formation: On the daily chart, we are observing a Doji candlestick pattern which suggests that the pullback rally is losing breath.

Outlook: The current price action suggests that 8163 is the immediate resistance for Nifty going forward. Any daily close above 8163 would continue the ongoing pullback rally. In coming trading session if Nifty trades above 8136 level then it can test the immediate resistance of 8163 level or even extend its gains up to 8200 level. On downside, 8050 - 7980 levels may act as support for the day.

We maintain our stance that this is a pullback rally of the current down trend. Hence, one should adopt cautiously positive approach towards the market.



| Market Breadth | NSE | BSE |
|------------------|---------------|---------------|
| Advances | 1024 | 1715 |
| Declines | 445 | 938 |
| Same | 79 | 128 |
| A/D Ratio | 2.30:1 | 1.83:1 |

Source: BSE NSE

| Market Turnover (Rs. in crores) | | | | |
|---------------------------------|---------------|---------------|-----------------|--------------|
| Indices | 17-Jun | 16-Jun | Chg | (%)chg |
| BSE | 3119.62 | 2505.16 | 614.46 | 24.53 |
| NSE | 16104.59 | 12426.12 | 3678.47 | 29.60 |
| Futures | 41822.60 | 33727.38 | 8095.22 | 24.00 |
| Options | 212775.3 | 176640.4 | 36134.90 | 20.46 |
| Total | 273822 | 225299 | 48523.05 | 21.54 |

Source: BSE NSE

| Indices Watch | | |
|------------------------------|-----------------|--------------|
| Indices | Close | (%) Chg |
| Bank Nifty | 17578.95 | -0.13 |
| CNX IT | 11145.15 | 0.23 |
| BSE Midcap | 10344.51 | 1.44 |
| CNX Midcap | 12666.85 | 1.52 |
| BSE Small Cap | 10796.55 | 1.33 |
| BSE Auto | 18236.54 | 0.81 |
| BSE Bankex | 20140.94 | -0.15 |
| BSE Capital Goods | 16874.22 | 1.11 |
| BSE Consumer Durables | 10184.14 | 2.26 |
| BSE FMCG | 7449.88 | 1.46 |
| BSE HC | 15875.34 | 1.62 |
| BSE IT | 10545.99 | 0.08 |
| BSE Metal | 9211.62 | 0.78 |
| BSE Oil & Gas | 9503.75 | 0.46 |
| BSE Power | 1992.08 | -0.45 |
| BSE PSU | 7467.10 | -0.02 |
| BSE Realty | 1365.26 | 0.38 |
| BSE TECK | 5963.70 | 0.42 |
| India VIX | 16.7275 | -2.56 |

Source: BSE NSE

| Index PE | 17-Jun | Yr high | Yr low |
|---------------|--------|---------|--------|
| Nifty | 22.43 | 24.06 | 20.70 |
| Sensex | 21.48 | 21.48 | 18.29 |

Source: BSE NSE

| Macro Economic Data | Current | Previous |
|----------------------------------|---------|----------|
| Monthly Inflation (m-o-m) | -2.65% | -2.33% |
| IIP growth (m-o-m) | 4.10% | 2.10% |
| Repo Rate | 7.25% | 7.50% |
| Reverse Repo Rate | 6.25% | 6.50% |
| CRR | 4.00% | 4.00% |
| GDP Growth (q-o-q) | 7.50% | 6.60% |

Source: Various

Data Alert From India –

- N.A.

Data Alert From Overseas –

- UK Retail Sales m/m at 2:00 pm
- US CPI and Core CPI m/m at 6:00 pm
- US Unemployment Claims at 6:00 pm
- US Current Account at 6:00 pm
- US Philly Fed Manufacturing Index at 7:30 pm

Domestic Stock Specific News –

- Finance minister says GST will be rolled out from April 1, 2016
- Govt source says Cabinet panel approved MSP for kharif crops
- Govt says housing for poor scheme to get 6.5% interest subsidy on loans
- Govt says Solar power capacity expansion to cost 6 trln rupees
- Govt defers decision on Kotak Mahindra Bank's FDI proposal
- Govt defers decision on Reliance Globalcom's FDI proposal
- RIL may buy Niko's 10% share in KG-D6 if price reflects "new reality"
- Tata Steel UK union suspends strike, as company to keep pension plan open
- State Bank of Bikaner to cut base rate by 15 bps to 9.95%
- YES Bank cuts some retail term deposit rates by 25 bps
- ONGC Videsh MD says seeking Maharatna status for higher invest freedom
- ONGC Videsh MD says company committed \$400 mln invest in Kazakhstan block
- Govt increases import duty on select flat, long steel products
- Financial Services dept may submit list of stalled infra projects in 10 days
- Govt launches 1.25-blrupees pharma cluster development plan
- Orchid Chemicals gets US FDA approval for generic of Factive

International News –

- US Federal Reserve leaves interest rates unchanged and hinted at a gradual rate hike in this year.

| Macro Economic Calendar | Date |
|-------------------------------|---------------------------|
| Indian IIP Data | 12 th Jul 2015 |
| Indian Inflation Data | 14 th Jul 2015 |
| Indian Monetary Policy | 04 th Aug 2015 |
| Indian GDP Data | 28 th Aug 2015 |

Source: Various

FII and DII Cash Activities 17-06-2015 –

| Date | FIIs | | | DII | | | Total Net (Rs cr) |
|----------------------------|---------------------|------------------|-----------------|---------------------|------------------|----------------|----------------------|
| | Purchase (Rs cr) | Sales (Rs cr) | Net (Rs cr) | Purchase (Rs cr) | Sales (Rs cr) | Net (Rs cr) | |
| 17/06/15 | 4190.71 | 5131.62 | -940.91 | 2728.31 | 1281.24 | 1447.07 | 506.16 |
| 16/06/15 | 3512.26 | 4033.91 | -521.65 | 1656.96 | 1012.15 | 644.81 | 123.16 |
| 15/06/15 | 3028.02 | 3632.88 | -604.86 | 1390.91 | 740.44 | 650.47 | 45.61 |
| 12/06/15 | 3119.17 | 3790.13 | -670.96 | 1537.78 | 832.20 | 705.58 | 34.62 |
| 11/06/15 | 3752.77 | 4375.66 | -622.89 | 1875.48 | 1286.19 | 589.29 | -33.60 |
| Month to date – Jun | 48802.72 | 55286.91 | -6484.19 | 24417.58 | 15985.01 | 8432.57 | 1948.38 |

(Data Source: NSE; Rs in crores)

The FII's total selling on 17-06-2015 is Rs 940.91 cr while DII total buying Rs 1447.07 cr.

FII Derivative Statistics 17-06-2015 –

| Symbol | BUY | | SELL | | Total | OPEN INTEREST | | | |
|---------------|------------------|-----------------|------------------|-----------------|----------------|------------------|------------------|---------------------|---------------|
| | No. of contracts | Amt in Crores | No. of contracts | Amt in Crores | | No. of contracts | Amt in Crores | Amt. Cr. (Pre. Day) | Change in OI% |
| INDEX FUTURES | 107753 | 2266.33 | 113235 | 2483.70 | -217.37 | 672057 | 15568.98 | 15649.40 | -0.51 |
| INDEX OPTIONS | 713296 | 16118.34 | 682750 | 15496.93 | 621.41 | 3241104 | 77916.25 | 74888.43 | 4.04 |
| STOCK FUTURES | 125194 | 3241.54 | 98320 | 2455.35 | 786.19 | 1986777 | 49046.30 | 48710.56 | 0.69 |
| STOCK OPTIONS | 66431 | 1585.83 | 69366 | 1652.49 | -66.66 | 93552 | 2278.50 | 2220.28 | 2.62 |
| TOTAL | 1012674 | 23212.05 | 963671 | 22088.48 | 1123.57 | 5993490 | 144810.03 | 141468.67 | 2.36 |

- Open Interest of derivative segment increased to Rs 144810.03 cr vs Rs 141468.67 cr.
- FIIs net sellers in index futures to the amount of Rs 217.37 cr and in index options net buyers to the amount of Rs 621.41 cr.
- Put-Call Ratio at 0.93 vs 0.81 (Bullish).

Most Active Nifty Call Option Contracts –

| Symbol | Expiry Date | Strike Price | No. of Contracts Traded | % Change in Contracts | Contract Value (Rs. Lakhs) | Closing Price | % Change in Price | Open Interest (OI) | % Change in OI |
|--------|-------------|--------------|-------------------------|-----------------------|----------------------------|---------------|-------------------|--------------------|----------------|
| NIFTY | 25-Jun-15 | 8100 | 1106389 | 31.66 | 2259639.11 | 65.00 | -3.06 | 4131100 | 18.35 |
| NIFTY | 25-Jun-15 | 8200 | 937480 | 16.80 | 1929310.40 | 28.20 | -12.83 | 4528550 | -5.84 |
| NIFTY | 25-Jun-15 | 8300 | 689864 | 75.90 | 1433611.55 | 10.60 | -22.06 | 4888975 | 12.31 |
| NIFTY | 25-Jun-15 | 8400 | 415610 | 49.63 | 873279.73 | 4.05 | -25.69 | 4399650 | 0.38 |
| NIFTY | 25-Jun-15 | 8000 | 407909 | -50.79 | 828671.21 | 123.75 | 2.91 | 2485600 | -12.12 |

Most active Nifty call option is at 8100 with 1106389 contracts 2nd highest active Call at Strike 8200.

Most Active Nifty Put Option Contracts –

| Symbol | Expiry Date | Strike Price | No. of Contracts Traded | % Change in Contracts | Contract Value (Rs. Lakhs) | Closing Price | % Change in Price | Open Interest (OI) | % Change in OI |
|--------|-------------|--------------|-------------------------|-----------------------|----------------------------|---------------|-------------------|--------------------|----------------|
| NIFTY | 25-Jun-15 | 8000 | 1128324 | 56.19 | 2271118.76 | 50.40 | -14.58 | 4929050 | 8.53 |
| NIFTY | 25-Jun-15 | 7900 | 866473 | 15.89 | 1717080.88 | 26.40 | -17.50 | 4190575 | -11.06 |
| NIFTY | 25-Jun-15 | 7800 | 622693 | -4.11 | 1216315.58 | 13.40 | -18.04 | 3985475 | -15.98 |
| NIFTY | 25-Jun-15 | 8100 | 600415 | 340.36 | 1229154.58 | 89.75 | -20.26 | 2659225 | 19.55 |
| NIFTY | 25-Jun-15 | 7700 | 254829 | -20.63 | 490982.22 | 7.00 | -17.65 | 3599975 | -0.72 |

Most active Nifty put option is at 8000 with 1128324 contracts 2nd highest active Put at Strike 7900.

Most Active Stock Futures –

| Symbol | Expiry Date | No. of Contracts Traded | Contract Value (Rs. Lakhs) | Closing Price | % Change in Price Close | Open Interest (OI) | % Change in OI | Value of Underlying |
|-----------|-------------|-------------------------|----------------------------|---------------|-------------------------|--------------------|----------------|---------------------|
| RELIANCE | 25-Jun-15 | 63464 | 146075.09 | 930.55 | 2.87 | 29092000 | 0.49 | 931.45 |
| TATASTEEL | 25-Jun-15 | 39551 | 60499.19 | 303.10 | 2.69 | 19050500 | -4.53 | 302.85 |
| LT | 25-Jun-15 | 31987 | 67889.21 | 1706.90 | 1.67 | 7098125 | 1.18 | 1711.00 |
| HDFCBANK | 25-Jun-15 | 24849 | 62406.40 | 1001.90 | -0.46 | 33249500 | -2.69 | 1004.50 |
| YESBANK | 25-Jun-15 | 20101 | 41119.61 | 817.20 | -0.04 | 10687500 | -0.67 | 816.30 |

Most active stock futures is **RELIANCE** with 63464 contracts while 2nd active stock is **TATASTEEL**.

Open Interest Figures (Jun Month Futures) –

| Bullish Trend : 📈 in OI - 📈 in Price | | | | | Bearish Trend : 📈 in OI - 📉 in Price | | | | |
|--------------------------------------|---------------|-------------|----------|----------------|--------------------------------------|---------------|-------------|---------|----------------|
| Symbol | Open Interest | % Chg in OI | Price | % Chg in Price | Symbol | Open Interest | % Chg in OI | Price | % Chg in Price |
| BRITANNIA | 244375 | 55.78 | 2768.50 | 5.66 | OIL | 355000 | 14.70 | 464.90 | -0.81 |
| BAJFINANCE | 50250 | 19.64 | 4789.30 | 1.85 | POWERGRID | 16316000 | 7.10 | 141.10 | -1.40 |
| OFSS | 97000 | 19.02 | 3766.60 | 4.05 | VEDL | 25573000 | 5.77 | 173.20 | -3.29 |
| PAGEIND | 26875 | 18.13 | 14501.65 | 0.61 | APOLLOHOSP | 502750 | 5.51 | 1192.05 | -0.20 |
| MINDTREE | 220000 | 10.97 | 1326.70 | 0.60 | NMDC | 13252000 | 4.23 | 116.25 | -0.90 |

| Short Covering: 📉 In OI - 📈 In Price | | | | | Long Position Squared Off: 📉 In OI - 📉 In Price | | | | |
|--------------------------------------|---------------|-------------|--------|----------------|---|---------------|-------------|---------|----------------|
| Symbol | Open Interest | % Chg in OI | Price | % Chg in Price | Symbol | Open Interest | % Chg in OI | Price | % Chg in Price |
| DISHTV | 21624000 | -23.24 | 114.50 | 6.26 | IDFC | 58860000 | -5.45 | 148.20 | -0.30 |
| IGL | 896000 | -11.20 | 401.00 | 3.78 | TATAMOTORS | 26967505 | -3.73 | 433.35 | -0.01 |
| TATAGLOBAL | 27018000 | -8.78 | 132.25 | 2.48 | L&TFH | 40944000 | -2.77 | 62.10 | -0.96 |
| AMARAJABAT | 180750 | -8.71 | 873.15 | 2.31 | HDFCBANK | 33249500 | -2.69 | 1001.90 | -0.46 |
| IBREALEST | 37744000 | -7.09 | 43.15 | 0.35 | BANKINDIA | 12978000 | -2.57 | 173.00 | -0.63 |



Securities in Ban For Trade Date 18-06-2015

AMTEKAUTO, CENTURYTEX, IBREALEST

Today's Result –

N.A.

EX- Dividend + Board Meeting –

EX-Dividend – ADC India, Allahabad Bank, Atul Ltd, Dena Bank, Denora India, Kotak Mahindra Bank, SFCL, Syndicate Bank, Union Bank, Vishnu Chemicals, Welspun Corp, Welspun India

Board Meeting (Purpose) – Sri Nachammai (General), IL&FS Eng (General), RNB Denims (General), Tirupati Fincorp (General)

Bulk Deals (BSE)*

N.A.

Bulk Deals (NSE)*

N.A.

Note- Executed on 17th Jun, 2015. Bulk Deal Buy/sell done by fund house is considered.

**Contact**

SMS: 'Arihant' to 56677

Websitewww.arihantcapital.com**Email Id**research@arihantcapital.com

**Arihant is Forbes Asia's '200 Best under a \$Billion' Company
'Best Emerging Commodities Broker' awarded by UTV Bloomberg**

Disclaimer: This document has been prepared by Arihant Capital Markets Limited (hereinafter called as Arihant) and its subsidiaries and associated companies. This document does not constitute an offer or solicitation for the purchase and sale of any financial instrument by Arihant. Receipt and review of this document constitutes your agreement not to circulate, redistribute, retransmit or disclose to others the contents, opinions, conclusion, or information contained herein. This document has been prepared and issued on the basis of publicly available information, internally developed data and other sources believed to be reliable. Whilst meticulous care has been taken to ensure that the facts stated are accurate and opinions given are fair and reasonable, neither the analyst nor any employee of our company is in any way is responsible for its contents and nor is its accuracy or completeness guaranteed. This document is prepared for assistance only and is not intended to be and must not alone be taken as the basis for an investment decision. All recipients of this material should before dealing and or transacting in any of the products referred to in this material make their own investigation, seek appropriate professional advice. The investments discussed in this material may not be suitable for all investors. The recipient alone shall be fully responsible/are liable for any decision taken on the basis of this material. Arihant Capital Markets Ltd (including its affiliates) or its officers, directors, personnel and employees, including persons involved in the preparation or issuance of this material may; (a) from time to time, have positions in, and buy or sell or (b) be engaged in any other transaction and earn brokerage or other compensation in the financial instruments/products discussed herein or act as advisor or lender/borrower in respect of such securities/financial instruments/products or have other potential conflict of interest with respect to any recommendation and related information and opinions. The said persons may have acted upon and/or in a manner contradictory with the information contained here and may have a position or be otherwise interested in the investment referred to in this document before its publication. The user of this report assumes the entire risk of any use made of this data / Report. Arihant especially states that it has no financial liability, whatsoever, to the users of this Report.

ARIHANT Capital Markets Ltd

#1011, Solitaire Corporate Park, Building No.10, 1st Floor,
Andheri Ghatkopar Link Road, Chakala, Andheri (E), Mumbai-400093
T. 022-42254800. Fax: 022-42254880

www.arihantcapital.com

RCH-DMU-01